



## S5 CONNECT / S5 CONNECT DHC Electric Trolley Instruction Manual

**REGISTER ONLINE**

[www.motocaddy.com/warranty](http://www.motocaddy.com/warranty)



Distance Measurement Device (DMD) features are legal to use when local USGA and R&A rule 14-3 is in effect. Always check local and competition rules prior to commencing play



## Contents Table

Serial Number Location / DHC Information .....	3	Using the USB Charging Port .....	18
Attaching the Wheels .....	4	Adjusting the Front Wheel Alignment.....	19
Battery Care and Advice .....	5	Introduction to DHC / DHC Parking Brake.....	20
Charging & Caring for your Lithium Battery .....	6	Smart Features / Disabling the Smart Features.....	21
Caring for your Lithium Battery .....	7	Installing the Motocaddy App / Language Settings.....	22
Unfolding your Trolley .....	8	Pairing Mode .....	23
Folding your Trolley.....	9	GPS Mode / Power Save Mode.....	24
Using the Upper & Lower Bag Supports .....	10	Automatic Hole Advancement / Units of Measure.....	25
Adjusting the Bag Supports .....	11	Push Notifications / Notification Settings.....	26
Safety Cut-out / Safe Use .....	12	Notification Stacking / Standalone Notifications.....	27
Caring for your Trolley .....	13	Using the Clock / Round Timer .....	28
Equipment Overview.....	14	Twilight Mode / OTA Updates / Closing the App .....	29
Handle Overview.....	15	FCC Statement.....	30
Using your S5 CONNECT / Power & Battery Level.....	16	Declaration of Conformity .....	31
Using the Adjustable Distance Control .....	17		

**Locating your Serial Number**

The serial number for your S5 CONNECT trolley is located on the underside of the battery tray. This number is required when registering your warranty online and should be kept handy for future use.

The same number should also be on the box received with your trolley. Please ensure you keep hold of the packaging in case you need to return your trolley for any reason. A proof of purchase must also be kept in case your trolley requires servicing during its warranty period.

**Please keep a record of your trolley serial number here for future reference**

M	C	S												
---	---	---	--	--	--	--	--	--	--	--	--	--	--	--

**Information about S5 CONNECT DHC (Downhill Control)**

The information in this instruction manual applies to both standard and DHC models.

For DHC specific functionality, please turn to page 20.

# Attaching the Wheels

## Attaching the Wheels

There is a left and a right wheel and it is important that you put them on the correct side, otherwise the trolley will not move. There is an 'L' and 'R' on the inside of the wheel on the central hub. Left and Right sides are determined when stood behind the trolley at the handle.

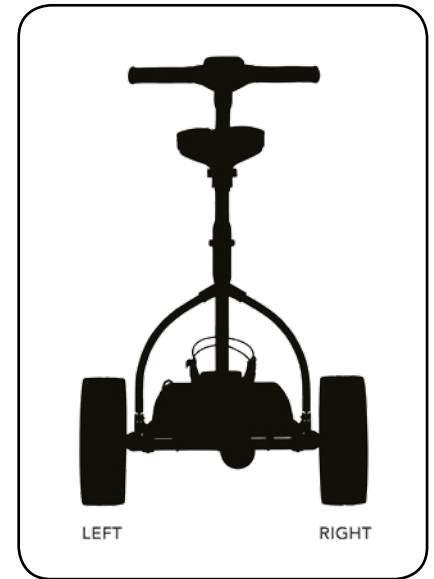
**NB : DHC trolley models do not have a specific left and right wheel.**

To attach the wheels, follow these simple steps:

1. Push the quick release in towards the centre of the wheel
2. Slide the wheel on to the axle as far as it will go
3. Release the button and pull the wheel outwards slightly to lock
4. You will hear a small click which will confirm they are in the correct position

The outer groove can be used as a 'free-wheel' option if you run out of battery power during a round of golf.

**IMPORTANT : To check you have attached the wheels correctly onto the inner groove, you will find they will only rotate freely in one direction. (This does not apply with DHC models)**



### Battery Care and Advice

All batteries must be charged as soon as possible after each use. Leaving batteries discharged for long periods of time will affect the battery life.

Please ensure that only batteries supplied by Motocaddy are charged with Motocaddy chargers. Cyclic battery chargers are designed specifically in accordance with the battery manufacturer's requirements. The Lithium battery charger MUST NOT be used to charge any other battery and is designed for use with Motocaddy Lithium batteries only.

The charger should only be connected to an earthed socket outlet and the battery charger should only be opened and maintained by authorised personnel. Unauthorised opening will invalidate your warranty.

The battery must be stored and charged on a dry non-carpeted surface and charged at temperatures ranging between 10°C and 30°C. Charging above or below these temperatures is not recommended as it can reduce the battery capacity.

When connecting your battery to the trolley, please ensure that the connections match up black to black and blue/red to blue depending on your battery type.

# Charging your Lithium Battery / Caring for your Lithium Battery

## Charging your Lithium Battery

1. Unplug the Lithium battery from the trolley. This should always be performed before folding the trolley to avoid damage to the battery and/or trolley
2. Plug the charger into your mains supply
3. Attach the battery cable to the charger matching the black and blue connections
4. When the charging LED indicator has turned green, the battery is fully charged and ready to be used

 RED - Battery Charging   GREEN - Battery fully charged and ready to be disconnected

5. The charging process will take between 3 to 5 hours depending on the depth of discharge (please be aware that this may take longer for the first few charges)
6. Once charging is complete please disconnect the charger from the mains power supply
7. Finally disconnect the charger from the battery

## Caring for your Lithium Battery

- Try to avoid getting the battery too wet (i.e. do not submerge the battery, avoid deep puddles and do not clean your trolley while the battery is still in the battery tray)
- Dropping the battery may cause damage to the internal cells
- Do not lift or carry the battery by the cable
- Use a damp cloth to clean off any dirt

### Recommendations for the Hibernation of Lithium Batteries During Winter Months

If for any reason your Lithium battery is not going to be used for lengthy periods, e.g. 3 months over the winter, it is advised to store the battery half charged. To do this simply use the battery for a round of golf as usual and charge it for 1.5 hours at the end of the round. Before the battery is used again, recharge it (top it up) prior to use. We recognise that extended absences are not always planned in advance, however when it is likely that you will not be using your battery for a period of time it is good practice to follow these steps to extend the life of your Lithium battery. Please ensure that the charger is ALWAYS disconnected from the battery after charging.

### Battery Management System (BMS)

Motocaddy Lithium batteries are fitted with a comprehensive battery management system (BMS) to protect the battery from excessive abuse, high currents, deep discharge and overcharge. When the battery is delivered there may be no output as the BMS is designed to maximize safety while shipping. Please ensure that the battery is fully charged prior to connecting it to your trolley as this will activate the BMS and effectively 'switch-on' the battery. From time to time, at deep discharge or long term storage the BMS may switch-off the battery. A full battery charge will rectify this problem.

Motocaddy golf trolleys are designed to work with the BMS system installed in the Lithium batteries and the voltage meter is also synchronised to work in conjunction with the battery. If for any reason the voltage on the battery falls below the low battery warning on the trolley, then the BMS may disable the battery to protect it. Again if this occurs please recharge fully. Please be aware that Lithium batteries tend to 'drop off' quickly at the end of the cycle so it is not advisable to attempt to play excessive holes as the BMS will activate for protection purposes.

## Unfolding your Trolley

This Motocaddy trolley is fitted with the QUIKFOLD system, allowing you to fold and unfold your trolley quicker than ever before.

### Unfolding your Trolley

1. Press and hold the upper QUIKFOLD release button (fig. 1)
2. Lift the handle and release the button (fig. 2)
3. Unfold the upper frame section **fully** (fig. 3)
4. Lift the main frame from the central hinge using the section marked 'Hold Here' until the QUIKFOLD system clicks in place. **Do not hold/touch the trolley anywhere else during this process** (fig. 4)
5. Unfold the upper bag support

**NB : Do not lift from the handle (step 4 above) as this will complicate the folding process and may damage your trolley.**

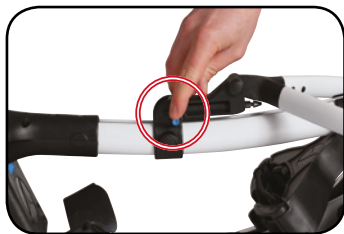


Fig 1



Fig 2



Fig 3



Fig 4



## Folding your Trolley

1. Make sure your battery is unplugged and if you have a Lead-acid battery you will need to remove this from the battery tray
2. Ensure that the upper bag support has been folded up to avoid damage to the frame while folding
3. Press and hold the lower QUIKFOLD release button (fig. 1)
4. Lower the main frame **completely**, releasing the button at any point (fig. 2)
5. Once the frame is **completely flat**, fold the handle towards the front wheel until the QUIKFOLD system clicks in place (fig. 3)
6. You may need to gently push as indicated if you do not hear a click (fig. 4)

**NB : To avoid injury, ensure the latch has clicked in place securely before carrying.**



Fig 1



Fig 2



Fig 3

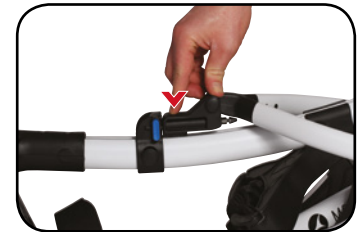


Fig 4

# Using the Upper and Lower Bag Supports

## Using the Upper Bag Supports

The upper bag support straps are secured using the following steps:

1. Stretch the elasticated strap around the bag & loop the rounded bar underneath the hook (fig. 1)
2. Position the two placement straps centrally on your golf bag (fig. 2)

## Using the Lower Bag Supports

This Motocaddy trolley is fitted with the EASILOCK™ bag attachment system. If you are using an EASILOCK™ compatible golf bag please follow these simple instructions:

1. Remove the two pre-fitted lower bag straps by depressing the rear button and sliding (fig. 3)
2. Match up the indicating line on the golf bag with the line on the lower bag support
3. Lower the bag until the pins lock in position. You should hear a small click

If you are using a non-EASILOCK™ golf bag, please use the following instructions:

1. Stretch the lower bag strap around the bag base & loop the rounded bar underneath the hook
2. Position the two placement straps centrally on the base of your golf bag

**Please ensure all straps are hooked securely before releasing. Failure to do so could result in injury.**



Fig 1



Fig 2



Fig 3

## Adjusting the Bag Supports

The bag support straps are manufactured from elasticated material to allow your golf bag to be held tightly in place.

The strap should be adjusted to be reasonably tight around the golf bag:

1. Unclip the elasticated straps from the housing by pulling outwards in the direction shown (fig. 1)
2. Move the bar as required to tighten or loosen the strap fitting. Pulling the bar downwards will tighten, pushing it upwards will loosen (fig. 2)
3. Ensure that the straps are clipped back into the housing before use (fig. 3)

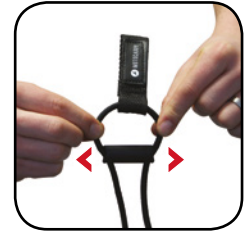


Fig 1



Fig 2



Fig 3

# Safety Cut-out / Safe Use of your Trolley

## Safety Cut-out

The S5 CONNECT trolley is fitted with a safety cut-out feature which will help prevent damage to your trolley in the event of it being inadvertently switched on and in a position where it is not able to move for 30 seconds. If this should occur, the trolley will automatically cut the power to the motor.

If your trolley has cut out for this reason, the LED panel will display an 'L' where the speed setting would usually be shown (fig. 1).

Pressing the on/off button will reset your trolley.

## Safe Use of your Trolley

Your Motocaddy trolley is designed for the transportation of golf bags and clubs contained within. Using the trolley for any other reason may cause damage to the trolley and cause harm to the user.

- Do not attempt to transport any other equipment
- The trolley is not designed for the transportation of people
- Do not use the trolley to assist you when going up hills
- Submerging the trolley in water (e.g. a lake) is likely to cause damage to the trolley
- Do not operate the trolley while under the influence of drugs or excessive amounts of alcohol
- All batteries must be disconnected from the trolley before transporting



Fig 1

## Caring for your Trolley

Although your Motocaddy trolley has been weatherproofed, please follow these simple guidelines to help protect your trolley:

- Do not store your trolley outside
- Try to minimise exposure to rain as much as possible with an umbrella during heavy rainfall
- Wipe excess water from the trolley prior to storage
- Never use a pressure washer to clean your trolley. To prevent water damage, wipe down with a damp cloth
- Avoid using high pressure air hoses near moving components

Your Motocaddy trolley is designed to require very little maintenance. We do however recommend giving your trolley regular checks to ensure:

- There is no build up of excess mud and dirt
- The front wheel nut is on tightly and quick release lever is clamped down
- The front wheel is not clogged up and turns freely
- The QUIKFOLD track is kept clean and well lubricated

Only original Motocaddy parts should be used when repairing your trolley.

# S5 CONNECT Equipment Overview

## S5 CONNECT Equipment Overview

1. Smart Display
2. Speed Setting, Power & Battery Indicators
3. Upper Bag Support
4. QUIKFOLD Upper Release Button
5. QUIKFOLD Lower Release Button
6. Rear Wheels
7. Rear Wheel Release Button
8. EASILOCK™ Lower Bag Support
9. Battery
10. Battery Tray
11. Motor (located under Battery Tray)
12. Front Wheel
13. Front Wheel Alignment Adjusters
14. Battery Connector
15. USB Charging Port (located under handle)



## S5 CONNECT Handle Overview

1. Speed Setting
2. Battery Indicator
3. Power Indicator
4. Speed Controller & Stop/Start
5. USB Charging Port (underneath)
6. Smart Display
7. Previous Hole
8. Change Mode & Clear Notifications
9. Next Hole
10. Hole Number
11. Hole Par
12. Distance to Middle of Green
13. Distance to Front of Green
14. Distance to Back of Green
15. Time
16. Round Timer
17. Push Notifications



GPS Mode



Clock Mode



Notifications



## Using your S5 CONNECT / Power and Battery Level

### Using your S5 CONNECT

The S5 CONNECT is extremely simple to control. There is one main button that is used to turn the trolley on and off, while also controlling the speed of the trolley. The speed can be adjusted while the trolley is stationary or in motion. The trolley has 9 speed settings (1 to 9) with 1 being the slowest setting and 9 the fastest. To increase the speed, rotate the speed dial clockwise, or anti-clockwise to decrease the speed.

To start the trolley, simply select your required speed setting and press the button. The trolley will smoothly accelerate until it reaches the selected speed. To stop the trolley, simply press the button again - there is no need to reduce the speed setting.

### Power and Battery Level

There are two indicating LEDs below the speed display. The right hand LED displays the battery capacity (green, amber & red) and will illuminate as soon as the battery is plugged in. The left hand LED will illuminate when the power is on.

The trolley is designed to protect your battery from being fully discharged, should your battery capacity drop too low the trolley will cut the power to the motor. If this should happen you will see "b" flashing on the screen.



## Using the Adjustable Distance Control

The S5 CONNECT features a basic, easy to use adjustable distance control which will allow you to send your trolley ahead of you from 15 - 45 metres.

1. While stationary select the speed that you wish to set your trolley off at
2. Hold down the on/off button for a couple of seconds, you will see the outer digits of the LED display rotate once clockwise (fig. 1) and "1" will then flash on the display (fig. 2). There are three settings for the distance, 1 = 15 metres, 2 = 30 metres and 3 = 45 metres
3. Turn the button clockwise to increase and anti-clockwise to decrease to your preferred distance
4. Press the on/off button to set the trolley in motion. While the trolley is powered using ADC, the left hand indicating LED will flash
5. The trolley can be stopped manually by pressing the button again

In the unlikely event that your trolley fails to register distance while in ADC mode, the trolley will cut power to the motor to prevent the trolley from travelling too far. The trolley screen will flash "E" to indicate that this safety feature has been instigated (fig. 3).

The trolley can be reset by pressing the on/off button once, thereby allowing you to continue to use the trolley with ADC disabled until you are able to contact our technical support team.



Fig 1



Fig 2



Fig 3

## Using the USB Charging Port

### Using the USB Charging Port

The S5 CONNECT features a USB charging port that can be used to top up your smartphone if required.

Simply remove the covering cap and plug a USB cable into the charging port located on the underside of the handle. The phone will continue charging for the duration of time that the cable is attached and the battery is connected.

It is important to note that the speed of charge will be lower than that of a mains AC charger and similar to plugging the phone into a PC. The USB charger takes power from the main trolley battery and continuous charging will reduce the battery capacity between charges. The trolley is designed to disable the USB port when the battery capacity reaches a preset level.

## Adjusting the Front Wheel Alignment

In the unlikely event that your trolley is not tracking in a straight line, the alignment of the front wheel can be adjusted to rectify the fault. This problem can be caused by a number of factors including a slightly loose bag support or an unevenly packed golf bag. Should you wish to alter the alignment of the front wheel, follow these simple steps:

1. Lift the quick release lever positioned on the front wheel housing and loosen the wheel nut (fig. 1)
2. There are two small metal dials on either side of the housing that are used to realign the wheel (fig. 2)
3. If your trolley is veering to the right, you will need to turn the left hand dial clockwise and the right hand dial anti-clockwise
4. If your trolley is veering to the left, you will need to turn the right hand dial clockwise and the left hand dial anti-clockwise
5. Tighten the wheel nut and push down the lever to lock the wheel back into place (fig. 3)

This procedure can be carried out until you are happy the trolley is moving in a straight line (please note you may only need to adjust one dial at a time).

**NB : These instructions are based on positioning yourself in front of the trolley looking at the wheel.**



Fig 1



Fig 2



Fig 3

**The below information is applicable to S5 CONNECT DHC model ONLY.**

## Introduction to DHC

The letters DHC stand for 'Downhill Control' and mean that your trolley will maintain a controlled speed while travelling down hills.

Whenever you are looking to move the trolley, even if just to reposition it ready to use, always put it on a low speed setting to make it easier to steer.

## Using the DHC Parking Brake

The S5 CONNECT DHC is fitted with an electronic parking brake. To use this feature, the trolley must be in a stationary position. The parking brake is initiated by rotating the speed dial down to 1 and then rotating one click further.

Once activated, the screen will toggle between 'P' (fig. 1) and '1' (fig. 2).

The speed setting can be adjusted while the parking brake is activated by turning the speed dial.

To release the parking brake, press the on/off button to start the trolley.



Fig 1



Fig 2

## Introduction to the S5 CONNECT Smart Features

As the world's first 'Smart Cart', the S5 CONNECT can be linked to the Motocaddy app via a Bluetooth® connection on any compatible smartphone; allowing the trolley's Smart Display to be used in place of a conventional GPS; including front, middle and back of green distances along with hole information, clock and round timer. Offering the ultimate in on-course connectivity, the S5 CONNECT can also receive push notifications for text messages, email, missed calls and other compatible apps.

The following pages contain an overview of how to use the S5 CONNECT smart features. For more detailed instructions including FAQs and feature updates, please visit [www.motocaddy.com/support](http://www.motocaddy.com/support).

## Disabling the Smart Features

The S5 CONNECT trolley can be used without connecting to the Motocaddy app.

When the trolley battery is connected, the Smart Display will initialise and display the time, date and "SEARCHING OPEN APP" message (fig. 1). The S5 CONNECT will continue to display this message until a Bluetooth connection has been made. The trolley can be used in this state with minimal effect on the trolley battery capacity.

It is possible to hide the 'Search' message by pressing the centre button (fig. 2) or turn off the Smart Display altogether by holding down the centre button for five seconds (fig. 3).

**IMPORTANT : Distance Measurement Device (DMD) features are legal to use when local USGA and R&A rule 14-3 is in effect. Always check local and competition rules regarding the use of DMD and Push Notifications prior to commencing play.**



Fig 1



Fig 2



Fig 3

# Installing the Motocaddy Smartphone App / Language Settings

## Installing the Motocaddy Smartphone App

It is necessary to install the Motocaddy app to utilise the S5 CONNECT Smart Features. The Motocaddy app utilises the GPS hardware on your smartphone to provide distance and hole information on the golf course.

**The Motocaddy app is compatible with iPhone 4s or newer (running iOS 9.0 or later) & Samsung Galaxy S4 or newer (running Android 4.3 or later). Please note, not all Bluetooth enabled mobile phone handsets are compatible with the Motocaddy S5 CONNECT and pairing for other devices cannot be guaranteed.**

To install the 'Motocaddy GPS' app, search for "Motocaddy" on either the Apple App Store or on Google Play.

Apple Devices



Android Devices



Once installed, select the Motocaddy GPS app and it will load the registration screen. When using the app for the first time, you will be prompted to allow the app to access your location and it is important that this is enabled to use GPS features.

We recommend that you complete the app registration process to allow us to keep you informed about future updates to both the app and S5 CONNECT smart functionality. Please note that completing the app registration does not register the trolley.

## Language Settings

The Motocaddy app is available in 5 languages (English, French, German, Spanish and Swedish) and is set automatically based on your phone's default language and region settings.

## Pairing Mode

It is necessary to pair your S5 CONNECT with a compatible smartphone to utilise the S5 CONNECT GPS and Notification features. You will need to enable Bluetooth on your mobile device.

Once your phone has been paired with the S5 CONNECT for the first time, it will automatically re-connect when the trolley is powered, the phone is within range and the Motocaddy app is open.

To pair your phone with your S5 CONNECT:

1. Plug the battery in to the trolley. The Smart Display will initialise and show "SEARCHING OPEN APP" (fig. 1)
2. Open the Motocaddy app on your phone and navigate to the 'Settings' page
3. Select the PAIR button (fig. 2). The "PAIR DEVICE" option will now show "SEARCHING"
4. Once the phone and S5 CONNECT have found each other, the Smart Display will show a unique 6 digit code (fig. 3) and a pop-up box will appear on the app to request this number
5. Enter the 6 digit trolley code into the app
6. Once accepted, the Smart Display will show "BLUETOOTH PAIRED" and the app will show "FORGET DEVICE"

The S5 CONNECT Bluetooth connection has a range of up to 30 metres (depending on phone model). If the phone goes outside of this range the Smart Display will show "OUT OF RANGE". If the phone comes back in to range within 30 minutes, it will automatically re-connect.

**For further information regarding pairing and unpairing, please visit [www.motocaddy.com/support](http://www.motocaddy.com/support).**



Fig 1



Fig 2 - App Settings



Fig 3

# Smart Display - GPS Mode / Power Save Mode

## Using GPS Mode

To use the S5 CONNECT in GPS mode, the Smart Display must be paired and connected to a compatible smartphone (see pg 23) which has the Motocaddy GPS app installed (see pg 22).

To start a round in GPS mode, open the Motocaddy app on your phone and follow these steps:

1. Select "Play Golf" from the home screen
2. The app should now show a list of local courses (if no local courses are shown, please check that location services have been enabled). It is also possible to manually search for a course using the search box at the top of the page (location services must still be enabled to receive distances on the course)
3. Select the required course and wait for the 1<sup>st</sup> hole to load within the app
4. Once loaded, the S5 CONNECT's Smart Display will update to show GPS information (fig. 1)

## Power Save Mode

By default, the app will load in 'Power Save' mode to minimise data and phone battery usage. It is recommended to use the app in 'Power Save' mode when connected to the S5 CONNECT.

More detailed course information, plus additional features including an aerial view of the hole, shot planning and greenside information is available within the app's 'Map View'.

It is possible to alter the app's default setting to load the 'Map View' within the app settings (fig. 2).



Fig 1

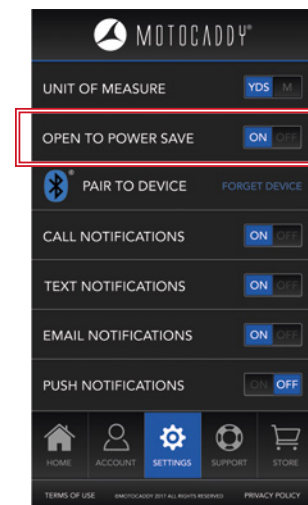


Fig 2 - App Settings



## Automatic Hole Advancement

The Motocaddy app will automatically advance to the next hole when you move towards the next tee. The S5 CONNECT Smart Display may show "Loading" while the app updates (fig. 1).

The app may not always automatically advance to the next hole. This can be caused by a number of factors including an altered tee position or incorrect changeover point.

It is possible to manually advance through the holes using either the app or the Smart Display.

To manually advance using the app, press the left (previous hole) and right (next hole) arrows at the bottom of the 'Power Save' or 'Map View' screens (fig. 2).

To manually advance directly from the trolley handle, press the left (previous hole) and right (next hole) buttons located beneath the Smart Display (fig. 3).

**Please be aware that holes will advance sequentially from the 1st hole onwards. If you are commencing play at a different location, you will need to manually advance to the required hole.**

## Units of Measure

Distance readings within the Motocaddy app and Smart Display can be displayed in both yards and metres. This can be set within the app settings.



Fig 1



Fig 2 - App Power Save Mode



Fig 3

## Smartphone Push Notifications

The S5 CONNECT Smart Display can be set to provide alerts for a wide-range of push notifications including new email, text messages, missed calls and other compatible apps including WhatsApp and Facebook.



To use the S5 CONNECT notifications feature, the Smart Display must be paired and connected to a compatible smartphone (see pg 23) which has the Motocaddy GPS app installed (see pg 22). It is also possible to use the S5 CONNECT GPS mode without enabling push notifications.

**IMPORTANT : Always check local and competition rules prior to enabling push notifications.**

## Notification Settings

It is possible to preset which notification types are sent to the S5 CONNECT trolley. Simply open the Motocaddy app and select the required notification types within the 'Settings' menu. (fig. 1).

There are also other app specific notification settings within your phone that need to be enabled for the notifications to work. For a full list of compatible apps, plus individual app notification settings (including the 'Push Notifications' option), please visit [www.motocaddy.com/support](http://www.motocaddy.com/support).

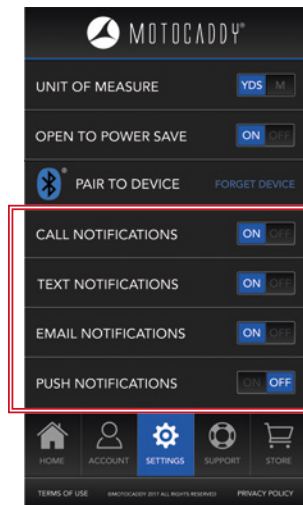


Fig 1 - App Settings

## Notification Stacking & Grouping

Notifications will stack on the S5 CONNECT Smart Display, with the most recent notification visible.

To clear a notification from the Smart Display, press the middle button (fig. 1). This will need to be repeated for each notification received.

Once all notifications have been cleared, the Smart Display will revert to the GPS screen (if "Play Golf" has been selected) or time and 'searching' message (if "Play Golf" has not been selected).

If you are using an iPhone with the S5 CONNECT, notifications will be grouped so the Smart Display shows the number of missed calls, emails or text messages that you have received from each contact (fig. 2). Grouping is not currently available for Android users and individual notifications will be shown for each alert.

## Using Notifications without the Motocaddy App

Once paired, the S5 CONNECT trolley has been developed to allow Push Notifications to be received on its Smart Display without the Motocaddy app being open. This allows the trolley to be used for Time, Date and Notification features without needing to have the app open.

To stop receiving Push Notifications, please disable Bluetooth on your mobile device, unpair your mobile device, update your mobile notification settings or switch off the Smart Display.



Fig 1



Fig 2

## Smart Display - Using the Clock / Round Timer

### Using the Clock

The date and time shown on the S5 CONNECT Smart Display (fig. 1) will be automatically set once you have paired your trolley with a phone for the first time. The date and time will be displayed based on your phone's date and time settings and can be shown in both 12 and 24 hour formats.

Once an initial pairing has been completed, the trolley will continue to record time based on the most recent pairing for up to 7 years without re-connection.

The date and time cannot be set manually through the S5 CONNECT Smart Display.

### Round Timer

The round timer is controlled through the smartphone app and starts counting up as soon as you select a course and enter 'Play Golf' mode. It can be paused and reset from the 'Map View' or 'Power Save' modes within the app (fig. 2).

When using the S5 CONNECT in GPS Mode, you can view the time and round timer by pressing the middle 'Change Mode' button below the Smart Display.



Fig 1

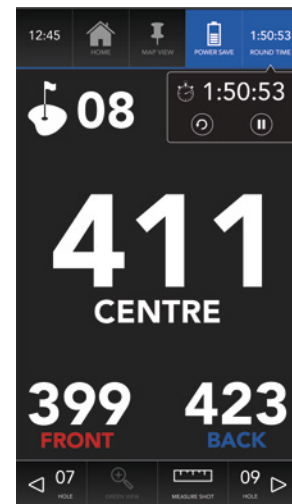


Fig 2 - Power Save mode

## Twilight Mode

Twilight mode can be enabled from the settings page within the Motocaddy app and alters the S5 CONNECT Smart Display to optimise for viewing in low light and bright sunlight.

## Over The Air (OTA) Updates

The Motocaddy app has been developed to offer 'Over The Air' (OTA) updates to the S5 CONNECT Smart Display, allowing the trolley software to be seamlessly updated with exciting new features and upgrades as soon as they become available.

Once a Bluetooth connection has been established, you will receive a notification on the Motocaddy app if a firmware update is available for your S5 CONNECT.

Further information and instructions regarding OTA updates is available at [www.motocaddy.com/support](http://www.motocaddy.com/support).

## Closing the Motocaddy App

Once you have completed your round, you can close the app to stop location tracking and data usage.

*APPLE iOS : Double-press the 'Home' button to see your most recently used apps. Swipe right or left to find the Motocaddy GPS app. Swipe up on the app preview to close it.*

*ANDROID : Press the 'Recent Applications' button to see your most recently used apps. Swipe up or down to find the Motocaddy GPS app. Swipe left or right on the app preview to close it.*

# FCC Statement

## FCC Statement

1. This device complies with Part 15 of the FCC Rules.

Operation is subject to the following two conditions:

- (1) This device may not cause harmful interference, and
- (2) This device must accept any interference received, including interference that may cause undesired operation.

2. Changes or modifications not expressly approved by the party responsible for compliance could void the user's authority to operate the equipment.

## FCC Radiation Exposure Statement:

The device has been evaluated to meet general RF exposure requirement. The device can be used in portable exposure condition without RF striction.  
NOTE: This equipment has been tested and found to comply with the limits for a Class B digital, pursuant to Part 15 or the FCC Rules.

These limits are designed to provide reasonable protection against harmful interference in a residential installation. This equipment generates, uses and can radiate radio frequency energy and, if not installed and used in accordance with the instructions, may cause harmful interference to radio communications, However, there is no guarantee that interference will not occur in a particular installation. If the equipment does cause harmful interference to radio or television reception, which can be determined by turning the equipment off and on, the user is encouraged to try to correct the interference by one or more of the following measures:

- (1) Reorient or relocate the receiving antenna
- (2) Increase the separation between the equipment and receiver
- (3) Connect the equipment into an outlet on a circuit different from that to which the receiver is connected
- (4) Consult the dealer or an experienced radio/ TV technician for help

**CAUTION : RISK OF EXPLOSION IF THE SMART DISPLAY CELL BATTERY IS REPLACED BY AN INCORRECT TYPE. DISPOSE OF USED BATTERIES ACCORDING TO THE INSTRUCTIONS.**





# DECLARATION OF CONFORMITY

ORIGINAL

**Business Name and Full Address of Manufacturer**

Motocaddy Ltd - Units 15-18 Stansted Distribution Centre,  
Start Hill  
Great Hallingbury

Hertfordshire  
CM22 7DG

**Name and Address of Authorised Representative**

-

**Name and Address of the Person in Community Authorised to compile the Technical File (if different to above)**

-

**Description of product (Commercial Name)**

Motocaddy Electric Trolley

**Function, Model, Type, Serial Number**

Function: Electric Trolley

Model: S1/S1 DHC/S1 PRO/S1 PRO DHC/S3 PRO/  
S3 PRO DHC/SS CONNECT/SS CONNECT DHC/  
S7 REMOTE/M1 PRO/M1 PRO DHC/M3 PRO/  
C-TECH

Type: Motocaddy Digital Range

**Standards Used**

BS EN ISO 12100 2010

**Place of Declaration**

Units 15-18 Stansted Distribution Centre,  
Start Hill  
Great Hallingbury

Hertfordshire  
CM22 7DG

**Date of Declaration** Sunday, January 01, 2017

**Declaration**

I declare that the machinery fulfils all the relevant provisions of the following Directives:- Low Voltage Directive 2006/95/EC, Electromagnetic Compatibility Directive 2004/108/EC.

**Person Empowered to Draw Up Declaration**

**Name:** Tony Webb

**Position:** Managing Director

**Signature:**



Motocaddy Ltd, Units 15 - 18 Stansted Distribution Centre,  
Start Hill, Great Hallingbury, Hertfordshire, CM22 7DG, United Kingdom

t: +44 (0)1279 712 370 e: [info@motocaddy.com](mailto:info@motocaddy.com) w: [www.motocaddy.com](http://www.motocaddy.com)



We are dedicated to protecting the environment and encourage the recycling of Motocaddy products through a free collection and disposal service. To find out more or to locate your nearest Motocaddy recycling point, please contact us through our website.

MC.17.48.002

EASILOCK™ Patent (GB) - GB2519073  
USB Charging Port Patent (GB) - GB2473845  
USB Charging Port Patent (AUSTRALIA) - 2010224448  
S5 CONNECT Patent Application (GB) - 16 19658.6

Apple, the Apple logo, and iPhone are trademarks of Apple Inc., registered in the U.S. and other countries. App Store is a service mark of Apple Inc.

Android and Google Play are trademarks of Google Inc.

Samsung and Galaxy S are trademarks of Samsung Electronics Co. Ltd.

The Bluetooth® word mark and logos are registered trademarks owned by the Bluetooth SIG, Inc. and any use of such marks by Motocaddy is under license. Other trademarks and trade names are those of their respective owners.